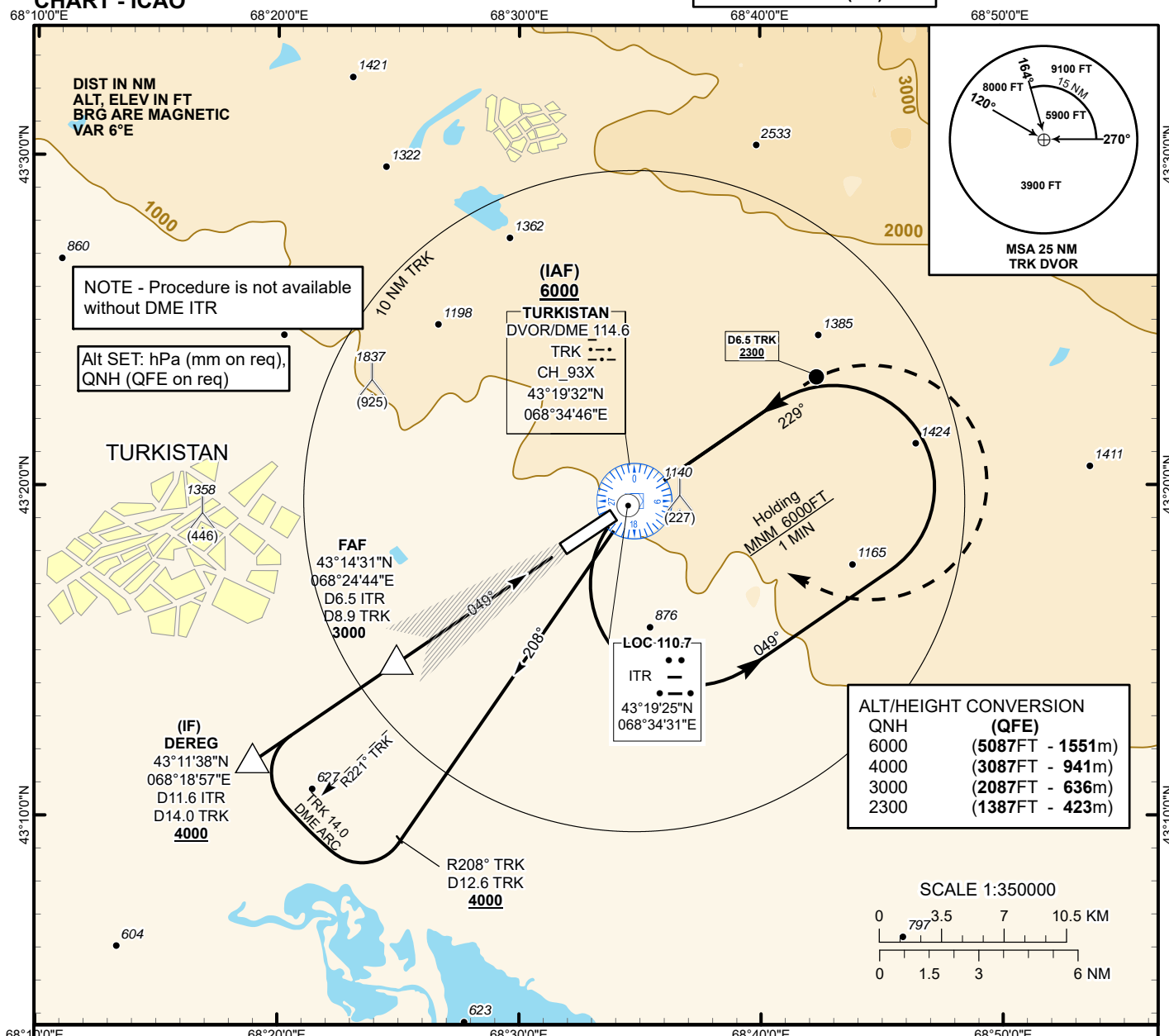


INSTRUMENT
APPROACH
CHART - ICAO

AERODROME ELEV **989 FT**
HEIGHTS RELATED TO
THR RWY 05 ELEV **913 FT**

TURKISTAN TOWER 131.3
TURKISTAN ATIS (EN) 124.4
TURKISTAN ATIS (RU) 118.3

TURKISTAN
LOC/DME Z
RWY 05



MISSED APPROACH

Climb on track 049°,
at 2300 ft or above,
outbound to D6.5 NM TRK,
turn RIGHT to TRK.
Climb initially to 4000 ft,
then as directed.
RADIO FAILURE:
In the case of RCF
climb to 6000 ft to TRK
and join holding pattern.
Missed approach turn
speed limited to
240 Kt IAS maximum.

IF
D11.6 ITR
D14.0 TRK
4000

TRANSITION ALT 10000 FT

FAF
D6.5 ITR
D8.9 TRK
3000

PDG 5.2% (3.0°)
049°

MAPt
0.5 ITR

IAF
6000

DVOR/DME
TRK

THR 05
ELEV 913FT

Aircraft Category		A	B	C	D	DIST to THR DME ITR	NM	6.5	6.0	5.0	4.0	3.0	2.0	1.0
Straight-in Approach OCA/H						DME TRK	NM	8.9	8.4	7.4	6.4	5.4	4.4	3.4
	LLZ (GP INOP)	1180(270)				ALTITUDE	FT	3000	2872	2554	2236	1917	1599	1280
						HEIGHT	FT	2087	1959	1641	1323	1004	686	367
DME ITR ZERO RANGED TO THR RWY 05														
Aerodrome Operating Minima DH ft x RVR(CMV)	LLZ (GP INOP)													
						GS	Kt	80	100	120	140	160	180	
						Desc.Rate(5.2%)	ft/min	420	530	640	740	840	950	
						FAF-MAPt (6 NM)	min:sec	4:25	3:32	2:57	2:31	2:12	1:58	

LOC/DME Z RWY 05

AERONAUTICAL DATA TABULATION

Final approach descent angle is 3°